



DODGE RAM TRUCK PERFORMANCE SUSPENSIONS



**DTPO2003H2 03-11
LIFTED TRACBAR KIT**

DTPO2003H2 03-08 LIFTED TRACBAR KIT

Check your package that it has all the components shown in the layout drawing. (see attached sheet)

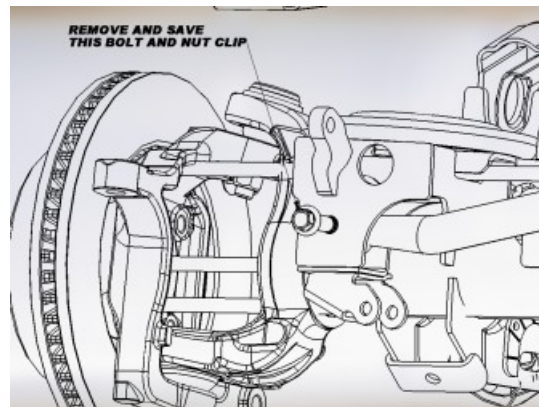
NOTE: If you are also installing a DT Pro Fab Steering Stabilizer Brace, install this TracBar first.

Warning: Never work under vehicle unless you have jack stands supporting the vehicle

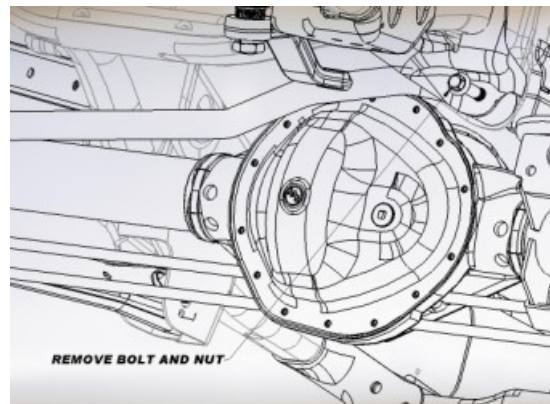
1. Place vehicle on level ground with the wheels blocked, parking brake set and the transmission in park for automatics or reverse for manual transmission.
2. Raise front of the vehicle so the front wheels are off the ground and support the frame securely on jack stands placed behind the front axle, one on each side of the vehicle and lower vehicle until weight is on jack stands. **Check that the vehicle is secure.**
3. Remove tires and let front axle go to full droop.
4. To provide access to the tracbar to axle retaining bolt, remove the nut from relay link ball stud at the tie rod. Hit tie rod to remove stud. **DO NOT HIT THE BALL STUD HOUSING OR STUD THREADS.**



5. Remove the bolt (18 mm wrench) at the axle end of the Tracbar. Pull the Tracbar free from the axle bracket. Retain bolt and nut clip for re-installation of the new DT TracBar.

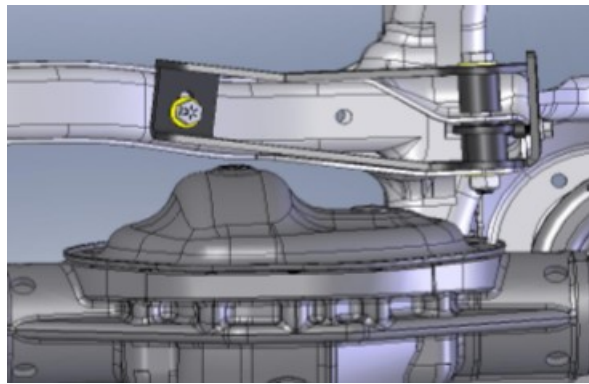
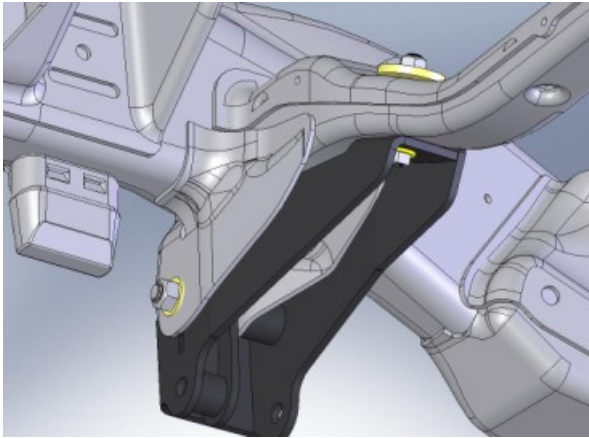


6. Remove bolt (18 mm wrench) and nut at frame bracket end of trac bar. Remove O.E. tracbar from vehicle.



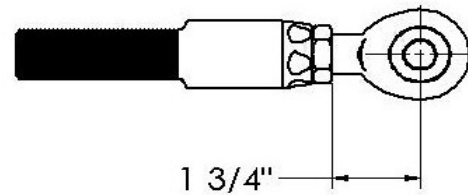
10. Mount the new DT Frame Bracket by bolting it thru the O.E.M. frame mount with 9/16" x 4 1/2" bolt and nut, just snug the bolt up to remove free-play. Next, install the 1/2" x 3" bolt with washer on the head end, up thru the slotted hole in the DT Bracket then thru the existing slotted frame holes under the driver's side of the engine. Install the large 1/2" washer and locknut on the end of the bolt. *Tighten the nut, but do not crush the frame.*

DT PRO FAB
Information & order Info
www.dtpofab.com
Email at sales@dtpofab.com
Phone 928.776.4129



10. With the DT Frame Bracket in position, take a 3/8" diameter drill bit and using the bracket as a guide, drill thru the front side of cross member only.
NOTE: an angle drill eases this operation. Frame may be marked and center punched. Then remove the bracket and drill thru the front side of cross member. Reinstall bracket.
11. Install 3/8" x 1" washer head bolt and flanged lock-nut thru DT ProFab Bracket and frame. *Torque to 45 lb ft*
12. Position Nut Plate behind O.E.M. trac bar/frame bracket. Install two 3/8" x 1" bolts thru DT Pro Fab Bracket into Nut Plate. *Torque to 30 lb ft*
- 13. Trac Bar Assembly**
14. Install Rod End (Heim Joint) with Jam Nut into Heim Adapter. Set to dimension shown in fig 15
Torque to 470 lb ft

15.



16. Assemble Bushing Adapter by installing Bushings, Lubricate Sleeve, push Sleeve into Bushings.



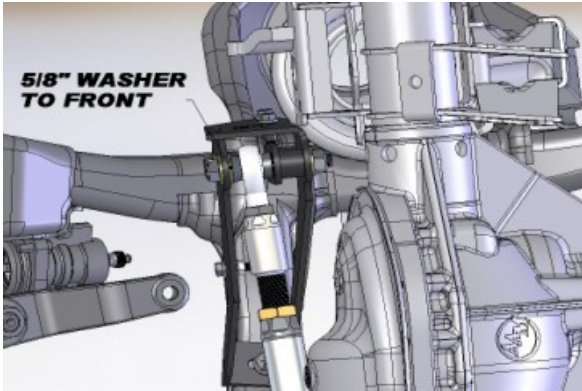
17. Install Bushing Adapter and Heim Adapter with Jam Nuts into Trac Bar. Set the center to center distance to approximately 40" for 3 1/2" lift.. Adjust so that there are equal lengths of threads showing on both Heim Adapter and Bushing Adapter.



18.

23. Install Trac Bar into axle housing bracket re-using stock bolt and nut clip. *Torque to manufacturer's specification.*

24. Install Rod End into new DT Pro Fab Bracket with Heim Spacers and a 5/8" washer to the front of vehicle. *See fig 26*
25. Install 5/8" x 4 1/2" bolt, washers and locknut. Turn the Trac Bar Tube to adjust the length to allow installation of bolt. Keep the exposed threads at both adapters equal. *Torque to 220 lb ft* Tighten 9/16" x 4 1/2" bolt and nut previously installed in DT Pro Fab Bracket. *Torque to 150 lb ft.*



26.

30. Tighten Jam Nuts, these need to be really tight, as torque rating is 525 lb ft.
31. Reinstall relay link to tie rod. *Torque nut to manufacturer's specification.*
- 32. Recheck that all fasteners are properly tightened!**
33. After a test drive to center the steering wheel, adjust relay link and retest until wheel is centered.
34. It is the ultimate buyers responsibility to have all bolts and nuts checked for tightness after the first 500 miles and then every 1000 miles.

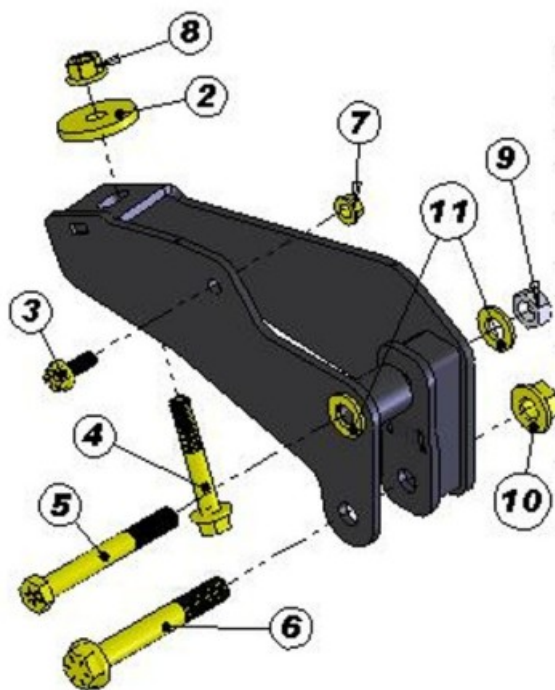
27. Centering Front Axle

28. Before you install the tires, put the jack stands under the axle so it will load the front suspension. Install the Measuring Tool provided on suspension link arm (*See fig 29*). Measure distance between tool and frame. Measure both sides. Adjust Trac Bar in or out until axle is within 1/16" side to side.



29.

DT PRO FAB
Information & order Info
www.dtprofab.com
 Email at sales@dtprofab.com
 Phone 928.776.4129



ITEM NO.	PART NUMBER	DESCRIPTION	QTY
1	02003-H2	03-07 LIFTED TRACBAR BRACKET	1
2	2INCH WASHER	2.00" OD WASHER	1
3	FLGBOLT37C100_GR8	3/8"-16 X 1.00" GRD 8 FLANGE BOLT	1
4	FLGBOLT50C300_GR8	1/2"-13 X 3.00" GRD 8 FLANGE BOLT	1
5	9/16" BOLT	9/16"-12 X 4.50" GRD 8 BOLT	1
6	FLGBOLT62C450_GR8	5/8"-11 X 4.50" GRD 8 FLANGE BOLT	1
7	FLGNUT37	3/8"-16 FLANGE NUT	1
8	FLANGE NUT 50	1/2"-13 FLANGE LOC NUT	1
9	STOVER 563-12	STOVER NUT-9/16"-12	1
10	FLGNUT 62	5/8"-11 FLANGE LOC NUT	1
11	9/16" FLT WASHER	9/16" SAE WASHER	2

ITEM NO.	PART NUMBER	DESCRIPTION	QTY.
1	02000-015	TRAC-BAR	1
2	DT2000-035	HD TRAC BAR HEIM ADAPTER	1
3	XM14 ROD END	7/8" BORE 7/8"-14 THD ROD END	1
4	02000-017	BUSHING ADAPTER	1
5	CTL09-05A	TRAC BAR CRUSH SLEEVE	1
6	CTL09-05B	SLEEVE '08 UP TRAC BAR	1
7	M03832	BUSHING	2
8	JNL18S	1 1/8" - 12 JAM NUT LEFT-HAND	1
9	JNR18S	1 1/8" - 12 JAM NUT	1
10	JNR14S	7/8"-14 JAM NUT	1
11	DRTB1002-1	HEIM REDUCING SPACER	2



DT PRO FAB
 Information & order Info
www.dtprofab.com
 Email at sales@dtprofab.com
 Phone 928.776.4129

WARRANTY

Thank you for your purchase of a DT PROFAB product. We appreciate your business.

IMPORTANT INFORMATION:

Notice to Owner Operator, Dealer and Installer:

Please make sure your Dealer/Installer explains and delivers all warning notices, warranty forms and instruction sheets included with DT PROFAB product. DT PROFAB reserves the right to update as necessary, without notice, and will not be held responsible for misprints, changes or variations made by vehicle manufacturers.

Please note that certain mechanical aspects of any suspension lift product may accelerate ordinary wear of original equipment components. The installation of certain DT PROFAB products may void the vehicle's factory warranty as it pertains to certain covered parts; it is the consumer's responsibility to check with their local dealer for warranty coverage before installation of any DT PROFAB product.

Warranty and Return policy:

DT PROFAB warrants its full line of products to be free from defects in workmanship and materials. DT PROFAB's obligation under this warranty is limited to repair or replacement, at DT PROFAB's option, of the defective product. **Any and all costs of removal, installation, freight or incidental or consequential damages are expressly excluded from this warranty.** DT PROFAB is not responsible for damages and/or warranty of other vehicle parts related or non-related to the installation of DT PROFAB product. A consumer who makes the decision to modify his vehicle with aftermarket components of any kind will assume all risk and responsibility for potential damages incurred as a result of their chosen modifications. Warranty coverage does not include consumer opinions regarding ride comfort, fitment and design. Warranty claims can be made directly with DT PROFAB or at any authorized DT PROFAB dealer.

Claims NOT Covered Under DT PROFAB Warranty

- Parts subject to normal wear, to include bushings, bump stops, ball joints, heim joints
- Coating Finish after 90 days
- Discontinued products at DT PRODUCTS, INC/DT PROFAB discretion
- Bent or dented product
- Leaf or coil springs used without proper bump stops
- Products with evident damage caused by abrasion or contact with other items
- Damage caused as a result of not following recommendations or requirements in the installation manuals
- Products used in applications other than listed in DT PROFAB's catalog
- Components or accessories used in conjunction with other manufacturer's systems
- Warranty claims without *Proof of Purchase* DT PROFAB accepts no responsibility for any altered product, improper installation, lack of or improper maintenance, or improper use of our products.



DT PROFAB
Information & order Info
www.dtprofab.com
Email at sales@dtprofab.com
Phone 928.776.4129