



# ***DT ProFab***

## **PERFORMANCE SUSPENSIONS**

# **Dodge Ram 1994-2013 STEERING BRACE KIT**



**WARNING:** This product can expose you to chemicals including; Hexavalent Chromium which is known to the State of California to cause cancer or birth defects or reproductive harm.  
For more information, visit [www.P65Warnings.ca.gov](http://www.P65Warnings.ca.gov)



## WARNING

## PRE-INSTALLATION NOTES:

- Read and understand all instructions, warnings and cautions in these instructions, before the installation or use of this product. **DO NOT INSTALL** or use this product if there is anything you do not understand in these instructions or related materials.
- Proper installation of DT Profab products requires knowledge of recommended procedures for disassembly/assembly of OE vehicles and components (i.e. steering tie rods, control arms, brake calipers, etc.). Access to OE shop manuals and special tools might be required. Attempting to install this kit without knowledge of these procedures and/or without the proper tools, may affect the safety of your vehicle and/or the performance of these components.
- DT Profab strongly recommends that this kit be installed by a Professional Technician.
- Certain DT Profab products are intended to improve On-Road and Off-Highway performance. Modifying your vehicle for off-road use may result in the vehicle handling differently than a factory equipped vehicle. Use of oversize tires, suspension lifts, body lifts and other suspension modifications may raise your vehicle's center of gravity resulting in an increased tendency for the vehicle to pitch and roll during sudden turns or abrupt maneuvers. Extreme care must be used to prevent loss of control or vehicle roll over. Failure to drive your modified vehicle safely may result in serious injury or death. Drive at reduced speeds to ensure your ability to maintain control of the vehicle under all driving conditions. Always wear seat belts.
- **DO NOT** combine suspension lifts, body lifts or other lift devices. Combined use of lifts may result in unsafe and/or unexpected handling characteristics (see enclosed product safety **WARNING** label).
- The use of larger than OE tire and wheel combinations may reduce the effectiveness of the braking system and increase the amount of pedal pressure necessary to obtain a given braking distance with normal stops and increase the stopping distance in a panic stop.



## CAUTION

## PRODUCT SAFETY LABEL:

- The suspension of this vehicle has been modified to improve **ON and OFF-ROAD PERFORMANCE**.
- As a result, this vehicle may handle differently than factory equipped vehicles.
- Extreme care must be used to prevent loss of control or roll over during sharp turns or abrupt maneuvers.
- Failure to drive this vehicle safely may result in serious injury or death.
- Take time to re-aquaint yourself with **NEW** unique handling characteristics of your vehicle and are confident of your ability to maintain control under all driving conditions.

**Always wear seat belts, and drive safely.**



## CAUTION

Coil springs store energy. Always release the load on coil springs in a slow and controlled manner. Use a safety chain or cable to prevent the possibility of the spring coming loose and causing injury. We recommend using a high quality internal type coil spring compressor when removing and installing springs.

## TORQUE SPECIFICATIONS:

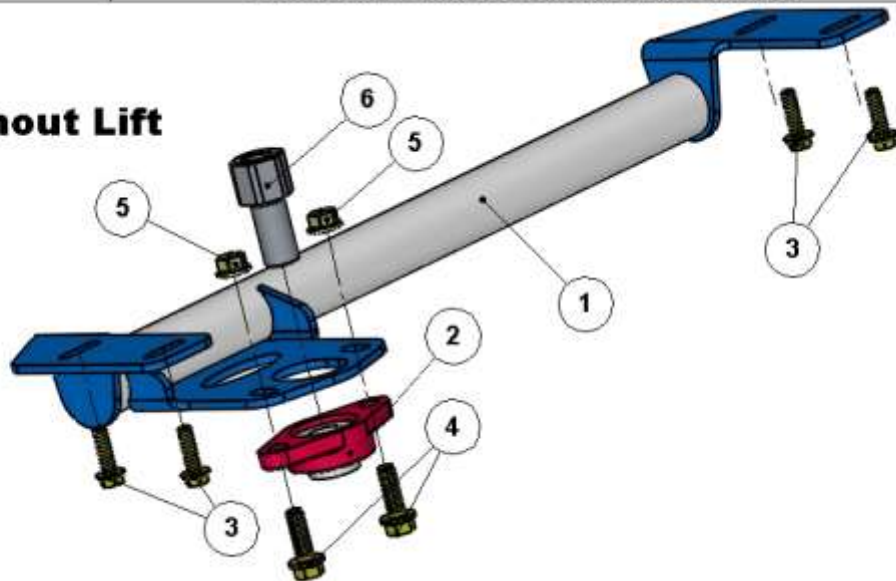
1/4 FASTENERS.....	10 FT.-LBS.
5/16 FASTENERS.....	17 FT.-LBS.
3/8 FASTENERS.....	30 FT.-LBS.
7/16-14 FASTENERS .....	50 FT.-LBS.
7/16-20 FASTENERS .....	55 FT.-LBS.
1/2-13 FASTENERS .....	75 FT.-LBS.
1/2 U-BOLTS .....	65-80 FT.-LBS.
9/16 FASTENERS.....	110 FT.-LBS.
9/16 GRADE 8 FASTENERS .....	170 FT.-LBS.
9/16 U-BOLTS .....	75-90 FT.-LBS.
5/8 FASTENERS.....	150 FT.-LBS.
5/8 U-BOLTS .....	85-110 FT.-LBS.
3/4 FASTENERS.....	175 FT.-LBS.

## GLOSSARY OF TERMS:

DS	Drivers side of the vehicle
PS	Passengers side of the vehicle
RH	Right hand thread (Clockwise to tighten)
LH	Left hand thread (Counterclockwise to tighten)
OE	Original equipment

ITEM NO.	PART NUMBER	DESCRIPTION	QTY.
1	02023-030	Ram Steering Box Brace - STOCK '94-'02	1
2	FL205-16 Bearing	UCFL205-16; 2 Bolt Flange Bearing	1
3	M10C35mm Flange Bolt	M10-1.5 x 35mm Flange Bolt	4
4	FLGBOLT50C150GR8	1/2"-13 X 1.50" GRD 8 FLANGE BOLT	2
5	FLGNUT500C	1/2"-13 FLANGE LOC NUT	2
6	2023-007	Pitman Arm Support Bearing Nut; 1994-2008	1

### DTP02023-03 1994-2002 without Lift

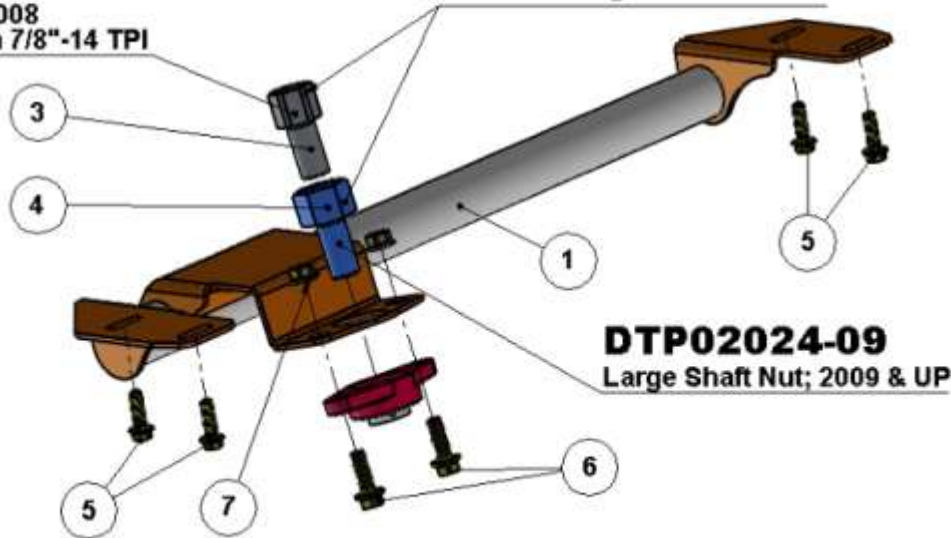


ITEM NO.	PART NUMBER	DESCRIPTION	QTY.
1	02024-03	Ram Steering Box Stabilizer; 2003-2013	1
2	FL205-16 Bearing	UCFL205-16; 2 Bolt Flange Bearing	1
3	2023-007	Pitman Arm Support Bearing Nut; 1994-2008	1
4	2024-009	Pitman Arm Support Bearing Nut; 2009-Current	1
5	BOLT10mm-1.5	M10-1.5 x 35mm HEX FLANGE BOLT	4
6	FLGBOLT50C150GR8	1/2"-13 X 1.50" GRD 8 FLANGE BOLT	2
7	FLGNUT500C	1/2"-13 FLANGE LOC NUT	2

### DTP02024-03

Shaft Nut; 1994-2008  
Saginaw Box with 7/8"-14 TPI

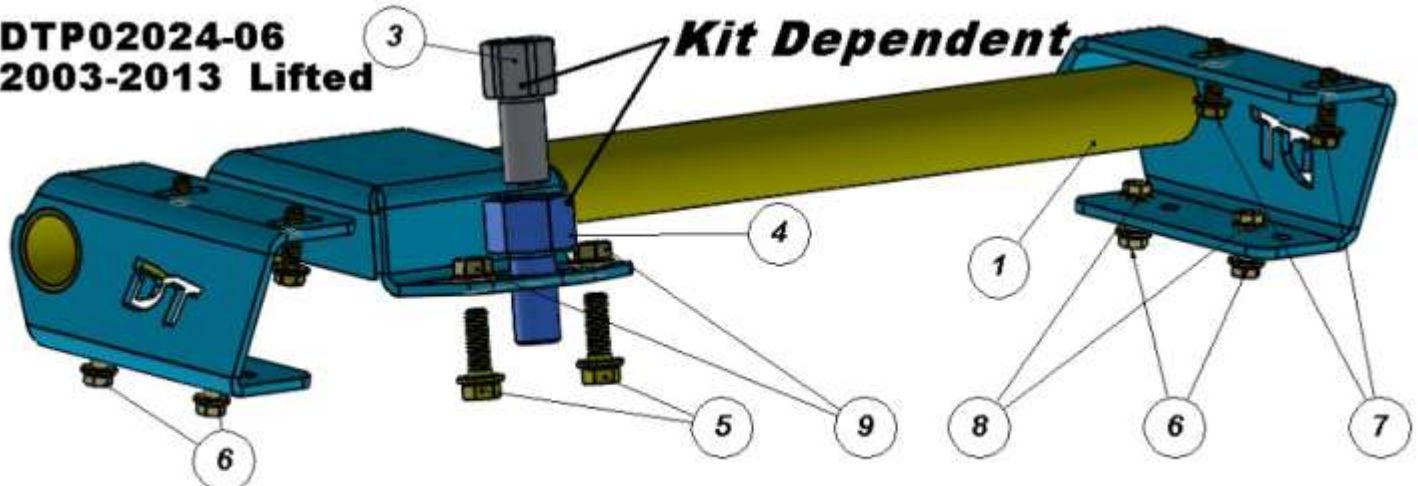
**Kit Dependent**

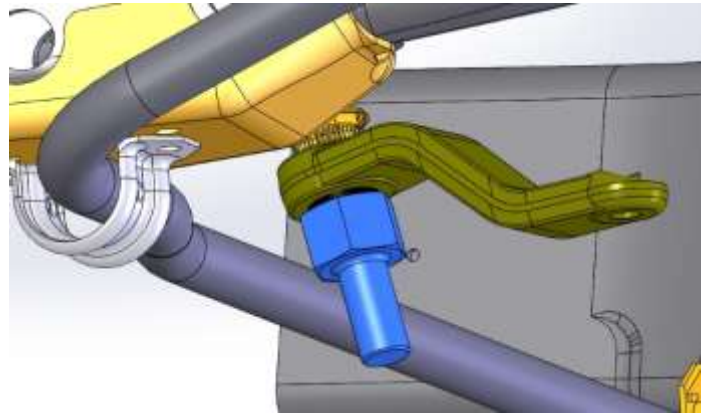
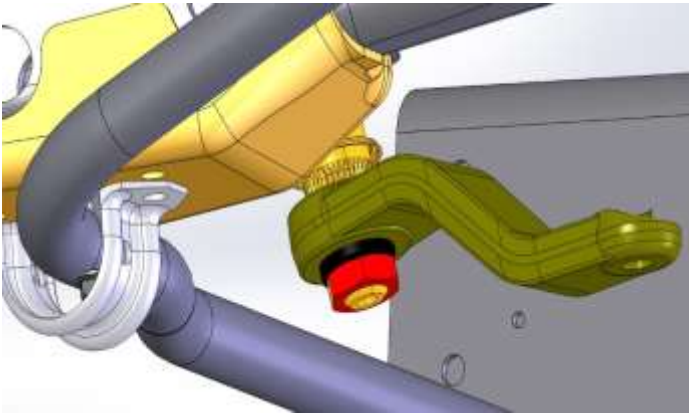


ITEM NO.	PART NUMBER	DESCRIPTION	QTY.
1	02024-06	STEERING BRACE	1
2	FL205-16 Bearing	UCFL205-16; 2 Bolt Flange Bearing	1
3	2023-007	Pitman Arm Support Bearing Nut; 1994-2008	1
4	2024-009	Pitman Arm Support Bearing Nut; 2009-Current	1
5	FLGBOLT50C150GR8	1/2"-13 X 1.50" GRD 8 FLANGE BOLT	2
6	FLGBOLT37C100GRD8	3/8"-16 X 1.00" GRD 8 FLANGE BOLT	4
7	M10C36mm Flange Bolt	M10-1.5 x 36mm Flange Bolt	4
8	FLGNUT37	3/8"-16 FLANGE NUT	4
9	FLGNUT500C	1/2"-13 FLANGE LOC NUT	2

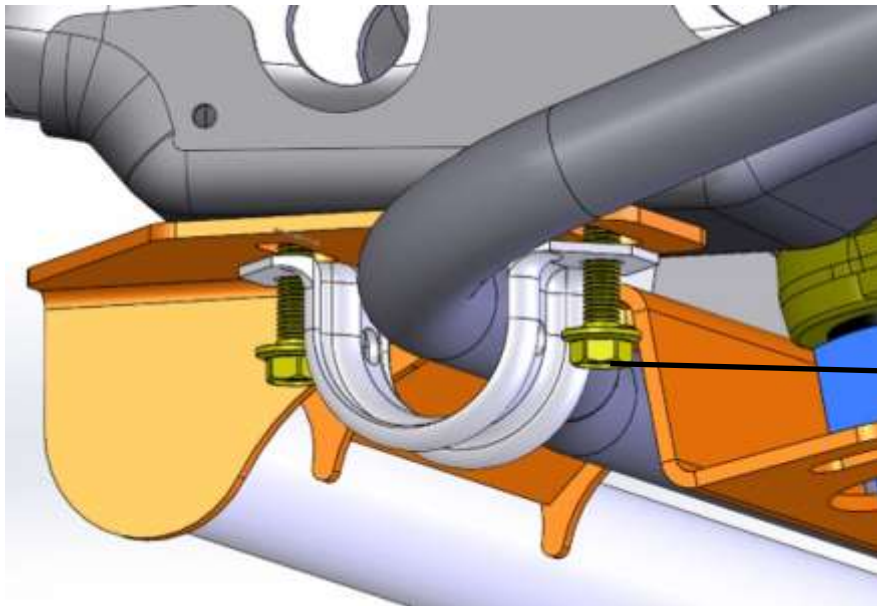
### DTP02024-06 2003-2013 Lifted

**Kit Dependent**





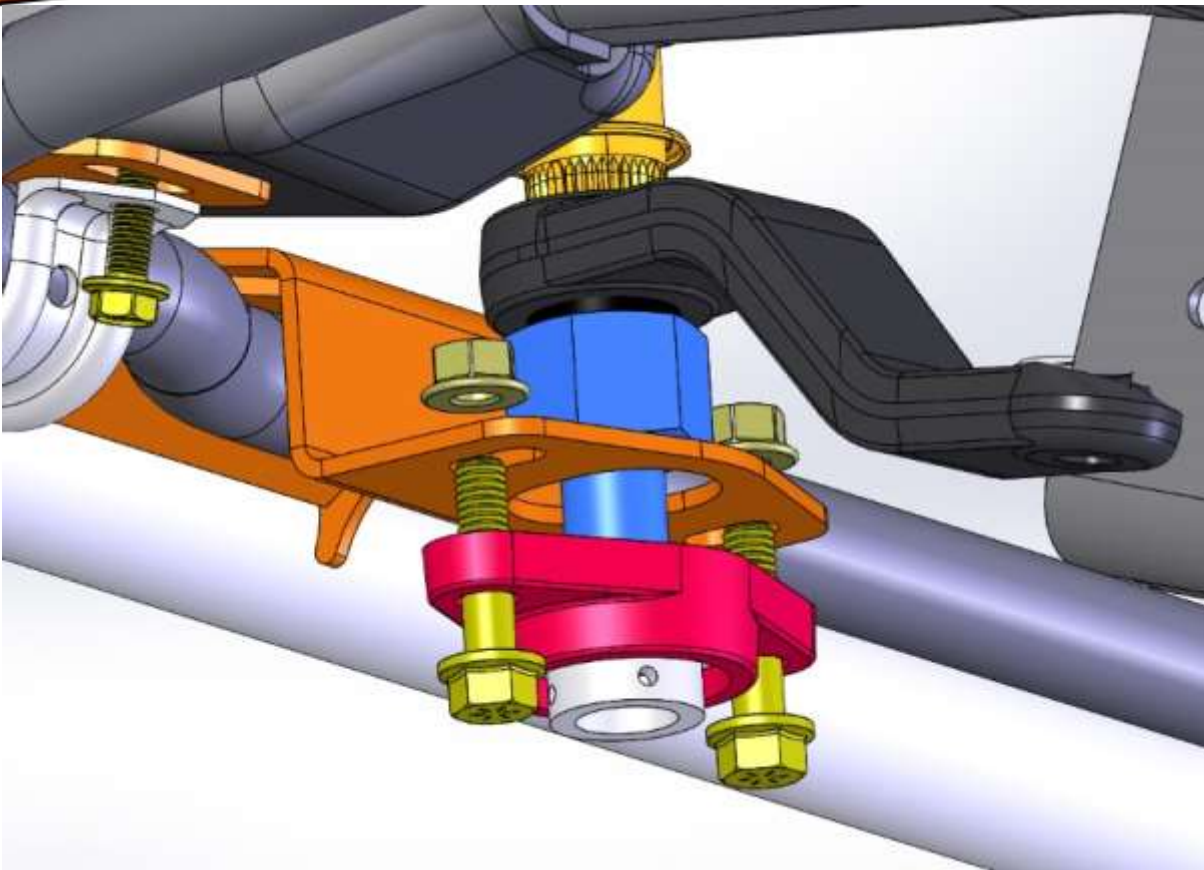
**Remove OEM Pitman Arm Nut in Red; Reuse OEM Lock Washer  
Replace with Provided Pitman Arm Stud, Shown in Blue  
Tighten & Torque To 185 Ft Lbs.**



**Position the DT Steering Brace Underneath the Chassis.**

**Line Up the Sway Bar Brackets with the Slotted Holes in the Steering Brace.**

**Insert the 10mm x 35mm Bolts through the Sway Bar Brackets, through the Steering Brace Slotted Holes and Into the Threaded Holes in the Chassis.**



**Place Flange Bearing over Pitman Arm Shafted Nut using the two ½” flange bolts and nuts to the Steering Brace Cross Member and tighten to 50 ft lbs.**

**Note: if the Flange Bearing does not sit flat it will self-align as you tighten the bolts.**

**Tighten the 2 Set Screws and Zerk fitting.**

**Grease bearing at regular lubrication intervals.**



## WARNING

## POST-INSTALLATION NOTES:

- ⇒ Check all fasteners for proper torque before driving the vehicle for the first time with this kit.
- ⇒ Check all fasteners for proper torque after the first 500 miles, also it is recommended during routine vehicle servicing.
- ⇒ The components included in this kit require regular inspection for wear or damage. Worn, damaged or loose parts can fail suddenly resulting in loss of control of the vehicle and personal injury.
- ⇒ In ALL steering and suspension positions, check to ensure that there is adequate clearance between ALL rotating, moving, fixed and heated members. Ensure adequate clearance around steering components, exhaust components, brake lines, fuel lines, fuel tank and electrical wiring.
- ⇒ Visually inspect components for wear or damage after each off-road use and during routine vehicle servicing. Worn, damaged or loose parts can fail suddenly resulting in loss of control of the vehicle and personal injury.
- ⇒ In general, larger tire and wheel combinations may increase stress and wear on OEM components leading to increased maintenance and greater risk of component failure.
- ⇒ Property damage or personal injury may result.
- ⇒ Large tire and wheel combinations may also alter speedometer calibration, reduce braking effectiveness and alter vehicle center of gravity height (See product safety warnings).
- ⇒ For questions or suggestions, contact our Technical Assistance Department at (928) 776-4129.

## TORQUE SPECIFICATIONS:

1/4 FASTENERS.....	10 FT.-LBS.
5/16 FASTENERS.....	17 FT.-LBS.
3/8 FASTENERS.....	30 FT.-LBS.
7/16-14 FASTENERS .....	50 FT.-LBS.
7/16-20 FASTENERS .....	55 FT.-LBS.
1/2-13 FASTENERS.....	75 FT.-LBS.
1/2 U-BOLTS.....	65-80 FT.-LBS.
9/16 FASTENERS.....	110 FT.-LBS.
9/16 GRADE 8 FASTENERS.....	170 FT.-LBS.
9/16 U-BOLTS.....	75-90 FT.-LBS.
5/8 FASTENERS.....	150 FT.-LBS.
5/8 U-BOLTS.....	85-110 FT.-LBS.
3/4 FASTENERS.....	175 FT.-LBS.

## GLOSSARY OF TERMS:

DS	Drivers side of the vehicle
PS	Passengers side of the vehicle
RH	Right hand thread (Clockwise to tighten)
LH	Left hand thread (Counterclockwise to tighten)
OE	Original equipment

# WARRANTY

Thank you for your purchase of a DT PROFAB product. We appreciate your business.

## IMPORTANT INFORMATION:

### Notice to Owner Operator, Dealer and Installer:

Please make sure your Dealer/Installer explains and delivers all warning notices, warranty forms and instruction sheets included with DT PROFAB product. DT PROFAB reserves the right to update as necessary, without notice, and will not be held responsible for misprints, changes or variations made by vehicle manufacturers.

Please note that certain mechanical aspects of any suspension lift product may accelerate ordinary wear of original equipment components. The installation of certain DT PRDFAB products may void the vehicle's factory warranty as it pertains to certain covered parts; it is the consumer's responsibility to check with their local dealer for warranty coverage before installation of any DT PROFAB product.

### Warranty and Return policy:

DT PROFAB warrants its full line of products to be free from defects in workmanship and materials. DT PROFAB's obligation under this warranty is limited to repair or replacement, at DT PROFAB's option, of the defective product. **Any and all costs of removal, installation, freight or incidental or consequential damages are expressly excluded from this warranty.** DT PROFAB is not responsible for damages and/or warranty of other vehicle parts related or non-related to the installation of DT PROFAB product. A consumer who makes the decision to modify his vehicle with aftermarket components of any kind will assume all risk and responsibility for potential damages incurred as a result of their chosen modifications. Warranty coverage does not include consumer opinions regarding ride comfort, fitment and design. Warranty claims can be made directly with DT PROFAB or at any authorized DT PROFAB dealer.

### Claims NOT Covered Under DT PROFAB Warranty

- Parts subject to normal wear, to include bushings, bump stops, ball joints, heim joints
- Coatings & Finish after 90 days
- Discontinued products at DT PRODUCTS, INC/DT PROFAB discretion
- Bent or dented product
- Leaf or coil springs used without proper bump stops
- Products with evident damage caused by abrasion or contact with other items
- Damage caused as a result of not following recommendations or requirements in the installation manuals
- Products used in applications other than listed in DT PROFAB's catalog
- Components or accessories used in conjunction with other manufacturer's systems
- Warranty claims without *Proof of Purchase* DT PROFAB accepts no responsibility for any altered product, improper installation, lack of or improper maintenance, or improper use of our products.



**WARNING:** This product can expose you to chemicals including; Hexavalent Chromium which is known to the State of California to cause cancer or birth defects or reproductive harm. For more information, visit [www.P65Warnings.ca.gov](http://www.P65Warnings.ca.gov)

**DT PRO FAB**  
Information & order Info  
[www.dtprofab.com](http://www.dtprofab.com)  
Email at [sales@dtprofab.com](mailto:sales@dtprofab.com)  
Phone 928.776.4129