



DT ProFab

PERFORMANCE SUSPENSIONS

DTPO2054

GEN 2 BOXED LONG ARM KIT



WARNING: This product can expose you to chemicals including; Hexavalent Chromium which is known to the State of California to cause cancer or birth defects or reproductive harm.

For more information, visit www.P65Warnings.ca.gov

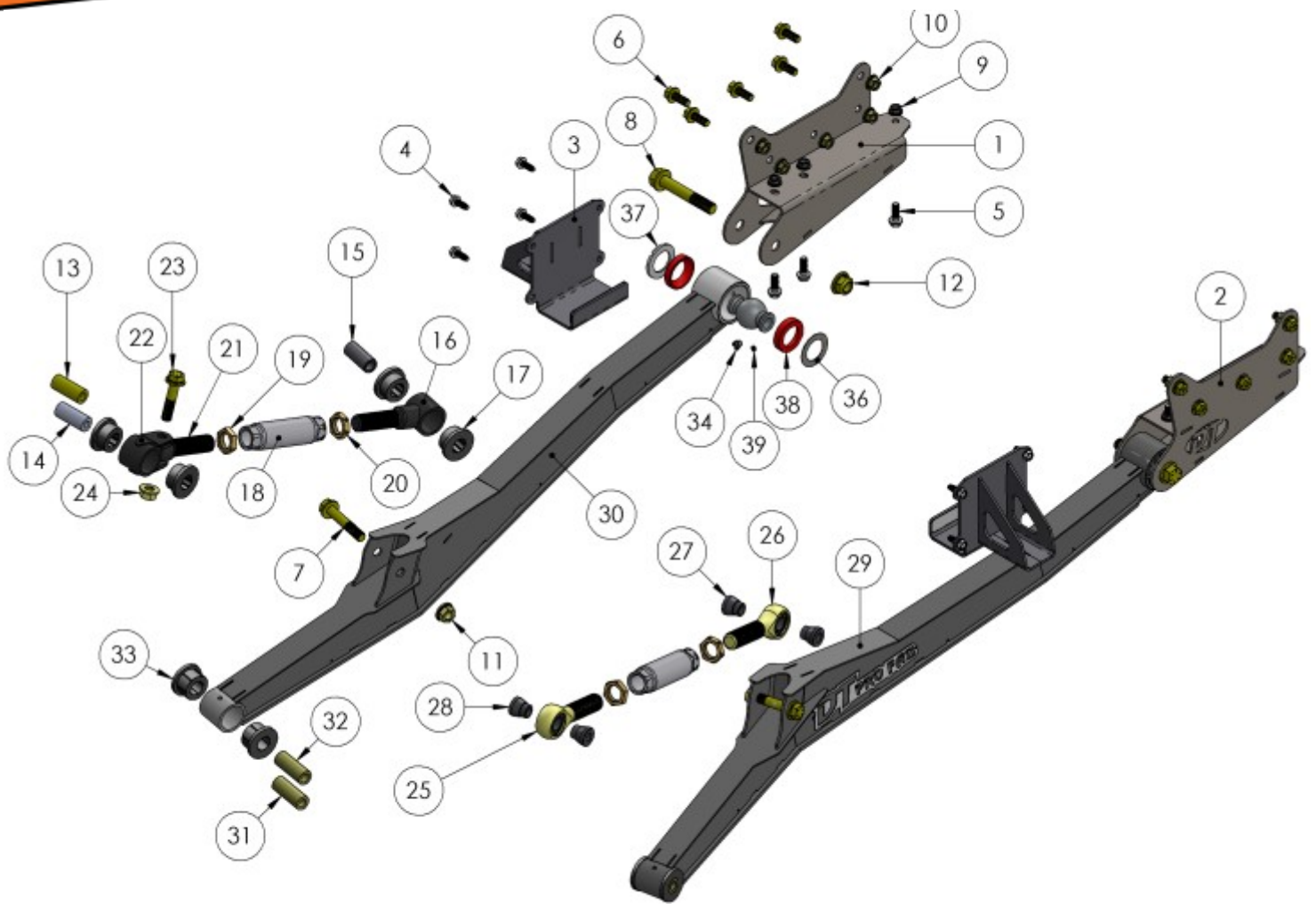
Warning: Never work under vehicle unless you have jack stands supporting the vehicle.

Note: Prior to installation, carefully inspect the vehicle's steering and drive train components. Be sure to check ball joints, wheel bearings, tie rod ends, track bar, and control arm bushings. Everything must be tight and in good working condition.

- We recommend installation be done by a trained professional.
- Read instructions carefully before attempting installation.
- Front end alignment is necessary upon completion of install.

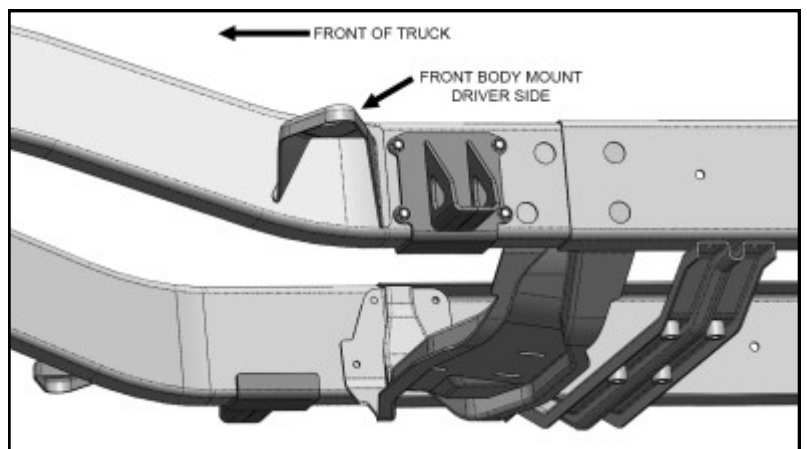
Check the parts list below to be sure that your kit is complete before you begin the installation.

ITEM NO.	PART NUMBER	DESCRIPTION	QTY.
1	2050-A101R	GEN 2 LONG ARM PASSENGER SIDE BRKT	1
2	2050-A101L	GEN 2 LONG ARM DRIVER SIDE BRKT	1
3	2050-300	GEN 2 PICK UP POINT	2
4	FLGBOLT37C100 S-TAP	3/8"-16 x 1" SELF TAPING FLANGE BOLT	8
5	FLGBOLT43C125GRD8	7/16"-14 X 1.25" GRD 8 FLANGE BOLT	6
6	FLGBOLT50C125GRD8	1/2"-13 X 1.25" GRD 8 FLANGE BOLT	10
7	FLGBOLT62C350GRD8	5/8"-11 X 3.50" GRD 8 FLANGE BOLT	2
8	FLGBOLT75C450 GR8	3/4"-10 X 4.50" GRD 8 FLANGE BOLT	2
9	FLANGE NUT 43	7/16"-14 SERRATED FLANGE LOC NUT	6
10	FLGNUT 50	1/2"-13 FLANGE LOC NUT	10
11	FLANGE NUT .625	5/8"-11 FLANGE LOCK NUT	2
12	FLANGE NUT .750	3/4"-10 FLANGE LOC NUT	2
13	CTL09-02B	CRUSH SLEEVE; 99-11 UPPER LINK	1
14	CTL09-02A	CRUSH SLEEVE; 94-98 UPPER LINK	1
15	CTL09-02F	CRUSH SLEEVE	1
16	2050-1205A	CASTER ADJUSTER BUSHING END	1
17	DT98212	1.75" BUSHING (SOFT)	4
18	2050-1201	ALUMINUM CASTER ADJUSTER	2
19	JNR18S	1 1/8"-12 RH JAM NUT	2
20	JNL18S	1 1/8"-12 LH JAM NUT	2
21	2050-122	CASTER ADJUSTER SWIVEL END STUD	1
22	2050-1211A	CASTER ADJUSTER SWIVEL END	1
23	FLGBOLT62C275GRD8	5/8"-11 X 2.75" GRD 8 FLANGE BOLT (FOR SWIVEL END)	1
24	FLANGE NUT .625	5/8"-11 FLANGE 5/8" LOC NUT (FOR SWIVEL END)	1
25	2052-1204-RH	REBUILDABLE JOINT W/ COM14 BEARING (RH)	1
26	2052-1204-LH	REBUILDABLE JOINT W/ COM14 BEARING (LH)	1
27	DRTB1015-1	HIEM REDUCING SPACER - 5/8"	2
28	DRTB1015-2	HIEM REDUCING SPACER - 14mm	2
29	02050-2013	DRIVER SIDE LONG ARM - GEN 2, 3 & 4	1
30	02050-2013M	PASSENGER SIDE LONG ARM - GEN 2, 3 & 4	1
31	CTL09-02C	CRUSH SLEEVE; 94-98 LOWER LINK; 1" OD X 2.625" LONG X .55" ID	2
32	CTL09-02D	CRUSH SLEEVE; 99-08 LOWER LINK; 1" OD x 2.625" LONG x .630" ID	2
33	M02384	1.75" URETHANE BUSHING	4
34	ZERK-90	90 DEGREE ZERK FITTING	2
35	BALLISTIC JOINT-BALL	2" BALL	2
36	BALLISTIC JOINT-WASHER	WASHER	2
37	BALLISTIC JOINT-RETAINER	THREADED RETAINER	2
38	BALLISTIC JOINT-BJ-673-2	POLY BEARING RACE	4
39	1/4"-20 SET SCREW	SET SCREW	2



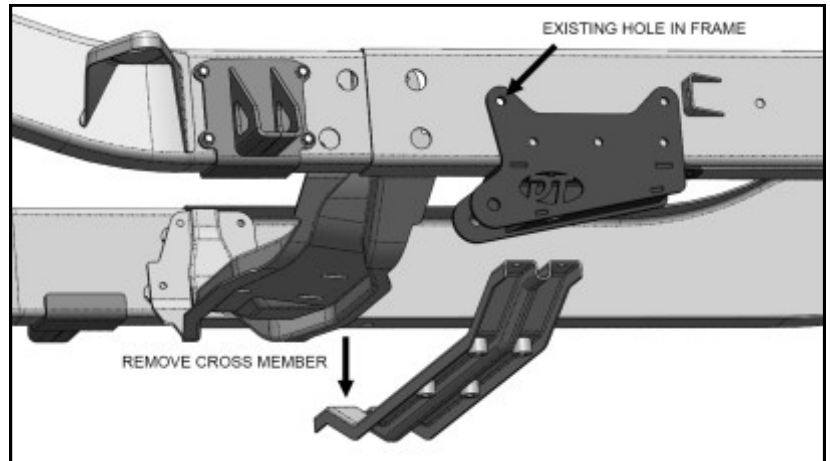
THIS IS A “CAN’T GO BACK” MODIFICATION. Frame suspension brackets must be removed from the frame.

1. Place vehicle on level ground with the wheels blocked, parking brake set and the transmission in park for automatics or reverse for manual transmission.
2. New lifting “pick-up points” **MUST BE INSTALLED FIRST**. The new DT LONG ARMS prevent lifting the frame from conventional points at the front of the frame.
3. Place one pick-up point bracket on the driver side frame rail as shown. Using the bracket as a template drill four 5/16” -11/32” holes into the frame. Repeat on passenger side.



4. Bolt the lift point brackets to the frame using the newly drilled holes and the provided 3/8" self tapping flange bolts. An impact driver is recommended for this task.
5. Raise the front of the vehicle so the front wheels are off the ground and support the frame securely on jack stands placed under the new PICK-UP POINT brackets, one on each side of the vehicle and lower the vehicle until weight is on jack stands. **Check that the vehicle is secure.**
6. Remove the tires and let the front axle go to full droop.

7. Locate the skid plate cross member to the rear of the transmission cross member. It must be removed to install the long arm brackets. *(The cross member shown has four bolts, some trucks only have two)*



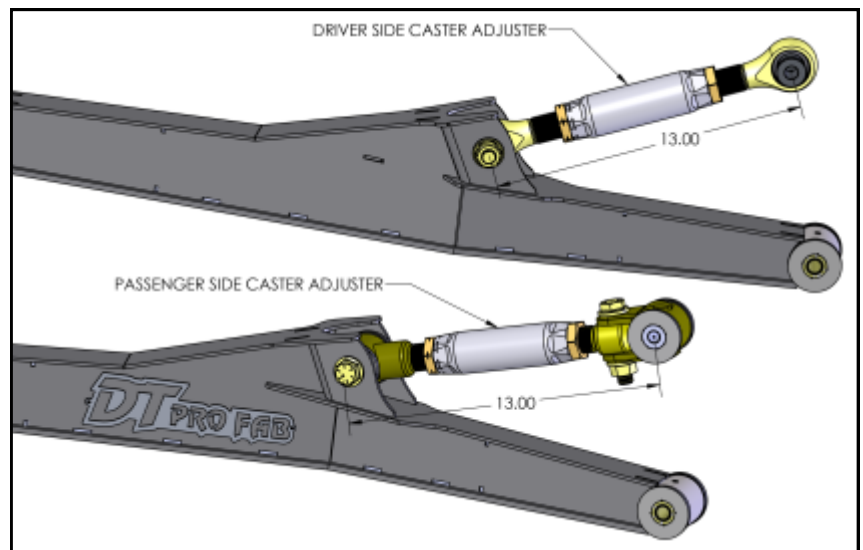
8. Align the front upper and bottom bolt holes in the bracket with the existing holes in the frame. Install 1/2" x 1" bolt and 1/2" flange loc nut in the existing hole in the side of the frame. Install the 7/16" x 1" bolts through the existing hole at the bottom of the frame with 7/16" flange lock nuts.

9. Drill the remaining 1/2" holes in the side of the frame and 7/16" hole on the bottom of the frame.

10. Install the remaining 1/2" bolts and flanged loc nuts. *Torque all to 110 lb-ft*

11. Install the 7/16" bolts through the holes at the bottom and secure with 7/16" flanged loc nuts. *Torque all to 70 lb-ft*

12. Assemble each DT ProFab boxed Long Arm based on the parts list and diagram in this packet. Pick the appropriate sleeves based on the model year of your truck. See the parts list and layout diagram. Lube all bushings and sleeves with a good moly grease during assembly. Install provided grease-zerks into the threaded hole at the rear of each long arm.



13. Remove the upper and lower control arms from the driver side only and save the axle mounting bolts, nuts and caster adjuster washer.

14. Remove the lower control arm bracket from the frame by cutting it off with a plasma cutter, cutting wheel or saws-all.

15. Install the front of the driver side long arm into the existing lower control arm bracket on the axle reusing the OEM bolt, nut and caster adjuster washer. *Torque to 220 lb-ft.*

16. Install driver side caster adjuster using the original bolt and nut for the upper control arm axle bracket. *Torque to 89 lb-ft.* Bolt the driver side caster adjuster to the long arm using the provided 5/8" x 3 1/2" flange bolt and 5/8" flange loc nut. *Torque to 110 lb-ft.*

17. Rotate the Driver Side long arm into the Driver Side frame bracket. Use the provided 3/4" x 4 1/2" flange bolt and 3/4" flanged loc nut. *Torque to 380 lb-ft.*

18. Repeat steps 13 - 17 on the passenger side.

19. Reinstall wheels. Raise front of truck and remove jack stands.

20. **Recheck that all fasteners are properly tightened!**

21. Installer: It is **BUYERS** responsibility to have all bolts and nuts checked for tightness after the first 500 miles and then every 1000 miles. Make them aware of this responsibility.

22. Take truck to an alignment shop and have the front end realigned.





WARNING

POST-INSTALLATION NOTES:

- ⇒ Check all fasteners for proper torque before driving the vehicle for the first time with this kit.
- ⇒ Check all fasteners for proper torque after the first 500 miles, also it is recommended during routine vehicle servicing.
- ⇒ The components included in this kit require regular inspection for wear or damage. Worn, damaged or loose parts can fail suddenly resulting in loss of control of the vehicle and personal injury.
- ⇒ In ALL steering and suspension positions, check to ensure that there is adequate clearance between ALL rotating, moving, fixed and heated members. Ensure adequate clearance around steering components, exhaust components, brake lines, fuel lines, fuel tank and electrical wiring.
- ⇒ Visually inspect components for wear or damage after each off-road use and during routine vehicle servicing. Worn, damaged or loose parts can fail suddenly resulting in loss of control of the vehicle and personal injury.
- ⇒ In general, larger tire and wheel combinations may increase stress and wear on OEM components leading to increased maintenance and greater risk of component failure.
- ⇒ Property damage or personal injury may result.
- ⇒ Large tire and wheel combinations may also alter speedometer calibration, reduce braking effectiveness and alter vehicle center of gravity height (See product safety warnings).
- ⇒ For questions or suggestions, contact our Technical Assistance Department at (928) 776-4129.

TORQUE SPECIFICATIONS:

1/4 FASTENERS.....	10 FT.-LBS.
5/16 FASTENERS.....	17 FT.-LBS.
3/8 FASTENERS.....	30 FT.-LBS.
7/16-14 FASTENERS	50 FT.-LBS.
7/16-20 FASTENERS	55 FT.-LBS.
1/2-13 FASTENERS	75 FT.-LBS.
1/2 U-BOLTS	65-80 FT.-LBS.
9/16 FASTENERS.....	110 FT.-LBS.
9/16 GRADE 8 FASTENERS	170 FT.-LBS.
9/16 U-BOLTS	75-90 FT.-LBS.
5/8 FASTENERS.....	150 FT.-LBS.
5/8 U-BOLTS	85-110 FT.-LBS.
3/4 FASTENERS.....	175 FT.-LBS.

GLOSSARY OF TERMS:

DS	Drivers side of the vehicle
PS	Passengers side of the vehicle
RH	Right hand thread (Clockwise to tighten)
LH	Left hand thread (Counterclockwise to tighten)
OE	Original equipment

WARRANTY

Thank you for your purchase of a DT PROFAB product. We appreciate your business.

IMPORTANT INFORMATION:

Notice to Owner Operator, Dealer and Installer:

Please make sure your Dealer/Installer explains and delivers all warning notices, warranty forms and instruction sheets included with DT PROFAB product. DT PROFAB reserves the right to update as necessary, without notice, and will not be held responsible for misprints, changes or variations made by vehicle manufacturers.

Please note that certain mechanical aspects of any suspension lift product may accelerate ordinary wear of original equipment components. The installation of certain DT PRDFAB products may void the vehicle's factory warranty as it pertains to certain covered parts; it is the consumer's responsibility to check with their local dealer for warranty coverage before installation of any DT PROFAB product.

Warranty and Return policy:

DT PROFAB warrants its full line of products to be free from defects in workmanship and materials. DT PROFAB's obligation under this warranty is limited to repair or replacement, at DT PROFAB's option, of the defective product. **Any and all costs of removal, installation, freight or incidental or consequential damages are expressly excluded from this warranty.** DT PROFAB is not responsible for damages and/or warranty of other vehicle parts related or non-related to the installation of DT PROFAB product. A consumer who makes the decision to modify his vehicle with aftermarket components of any kind will assume all risk and responsibility for potential damages incurred as a result of their chosen modifications. Warranty coverage does not include consumer opinions regarding ride comfort, fitment and design. Warranty claims can be made directly with DT PROFAB or at any authorized DT PROFAB dealer.

Claims NOT Covered Under DT PROFAB Warranty

- Parts subject to normal wear, to include bushings, bump stops, ball joints, heim joints
- Coating Finish after 90 days
- Discontinued products at DT PRODUCTS, INC/DT PROFAB discretion
- Bent or dented product
- Leaf or coil springs used without proper bump stops
- Products with evident damage caused by abrasion or contact with other items
- Damage caused as a result of not following recommendations or requirements in the installation manuals
- Products used in applications other than listed in DT PROFAB's catalog
- Components or accessories used in conjunction with other manufacturer's systems
- Warranty claims without *Proof of Purchase* DT PROFAB accepts no responsibility for any altered product, improper installation, lack of or improper maintenance, or improper use of our products.



DT PRO FAB
Information & order Info
www.dtprofab.com
Email at sales@dtprofab.com
Phone 928.776.4129