



DT ProFab

PERFORMANCE SUSPENSIONS

DTPO2054

GEN 3 & 4 BOXED LONG ARM KIT



WARNING: This product can expose you to chemicals including; Hexavalent Chromium which is known to the State of California to cause cancer or birth defects or reproductive harm.
For more information, visit www.P65Warnings.ca.gov

Check your package that it has all the components shown in the layout drawing and parts list. THIS IS A "CAN'T GO BACK" MODIFICATION. Suspension brackets must be removed from the frame.

Warning: Never work under vehicle unless you have jack stands supporting the vehicle

Note:

- We recommend installation be done by a trained professional.
- Read instructions carefully before attempting installation.

1. Place vehicle on level ground with the wheels blocked, parking brake set and the transmission in park for automatic or reverse for manual transmission. New Long Arm mounts with "pick-up points" MUST BE INSTALLED FIRST. The new DT LONG ARMS prevent lifting the frame from conventional points at the front of the frame.



2. Start with the driver side bracket. To locate the bracket on the frame first support the Trany/Transfer case X-member and remove the 2 long bolts connecting it to the frame on the driver side.

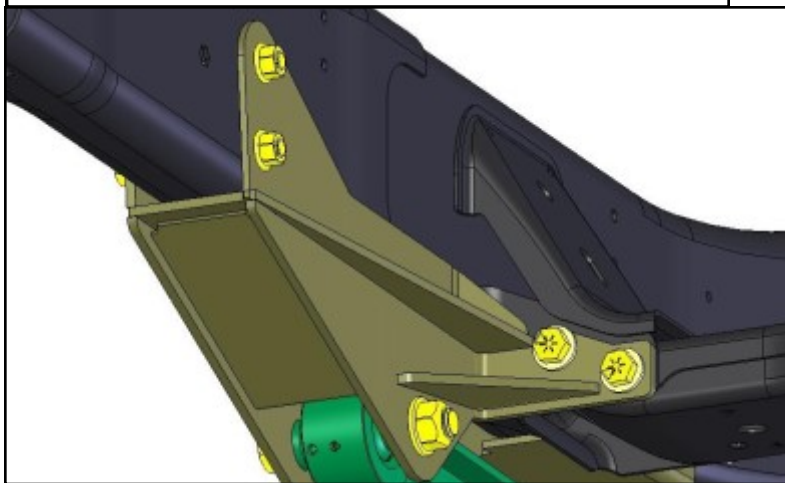
3. Locate and insert 1"od x 2.75" long Anti-Crush sleeve into existing oblong hole in frame rails behind transfer case x-member.

4. Install Long Arm Bracket over frame rail and installed sleeve. Locate the BRACKET using the most rearward upper bolt hole and bracket ear that goes to the X-Member. Install 1/2"x 4" bolt first trough bracket then sleeve in frame. Next install 2 9/16" x 7" bolts into the ear on the bracket and through the X-Member. Use a 9/16" washer on each side and snug the provided 9/16" Stover Lock Nuts.

5. You may have to place a jack under bracket and lift till it fits tight to frame rail bottom.

6. Repeat on passenger side. NOTE: If truck is equipped with an ERG module, the module must be removed before installing the passenger side long arm bracket. The module will be reinstalled later with the provided relocation bracket.

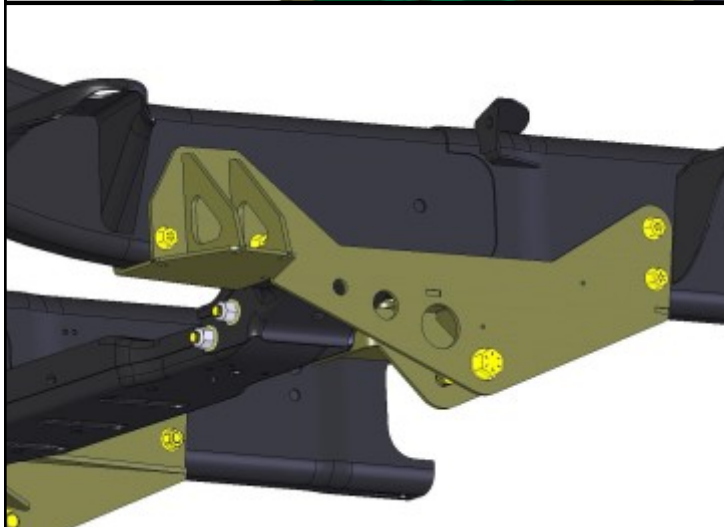
7. Drill 1/2" holes in frame rails using the partially installed long arm bracket as a template; first one side then the other. It may be necessary to remove front drive shaft and exhaust pipe to drill all holes.



8. Install all 1/2" flange bolts and nuts. Tighten all bracket bolts and nuts.

9. If an ERG module was removed, it can be reinstalled now. Attach the module to the new offset bracket using the 4 3/8"x3/4" bolts included with this kit. Attach the new bracket to the frame using the top 2 existing holes and 2 of the original factory bolts.

10. Position hoist arms to lift from the lifting points on the new long arm brackets. Raise the



front of the vehicle so the front wheels are off the ground. Check that the vehicle is secure.

11. Remove tires and let front axle go to full droop.

12. Remove the upper and lower control arms from driver side only. Save the axle mounting bolts, nuts and caster adjuster washer.

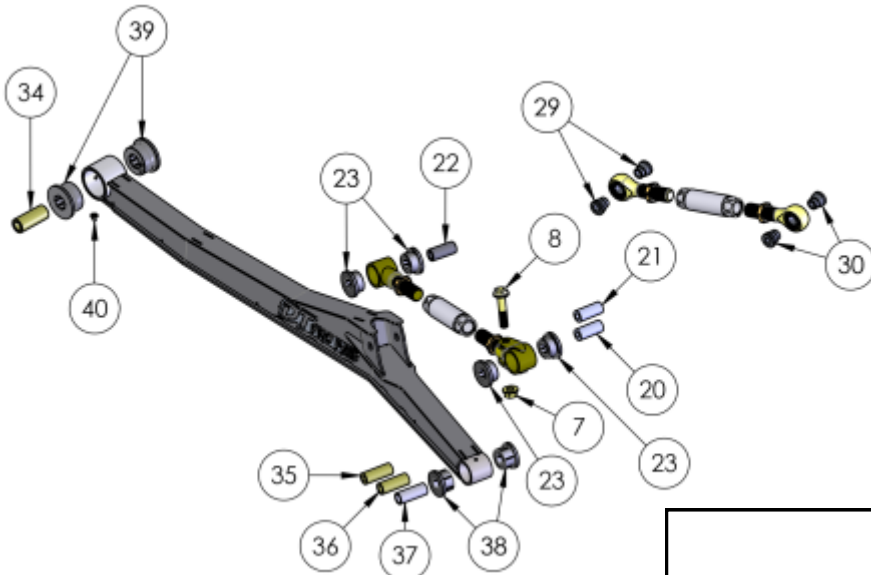


13. Remove the lower control arm bracket from the frame by cutting off with a plasma cutter, cutting wheel or saws-all. Grind frame clean.

14. **ARM ASSEMBLY:** Lube bushings and sleeves with a good moly grease during assembly. Install provided grease zerks into the rear bushing housing on each arm. **NOTE: THE DIAGRAM BELOW SHOWS A STANDARD ARM WITH ALL BUSHING SLEEVE OPTIONS.** Pick the appropriate bushing sleeves based on the model year (see parts list on next page).

15. Install driver side LONG ARM to driver side front lower axle bracket using O.E. caster adjuster bolt. **Later; Torque nut to 125 lb-ft** Let arm hang for now and set up driver side caster adjuster.

16. Assemble driver side CASTER ADJUSTER. Rough adjust center-to-center distance to 13.00" to start.



17. Install driver side CASTER ADJUSTER using the O.E. bolt and nut for the upper axle bracket. **Later Torque to 89 lb-ft.** Swing long arm up & Install **CASTER ADJUSTER** into **LONG ARM** pocket and install 5/8"-11 x 3.5" bolt and 5/8" flange loc nut.

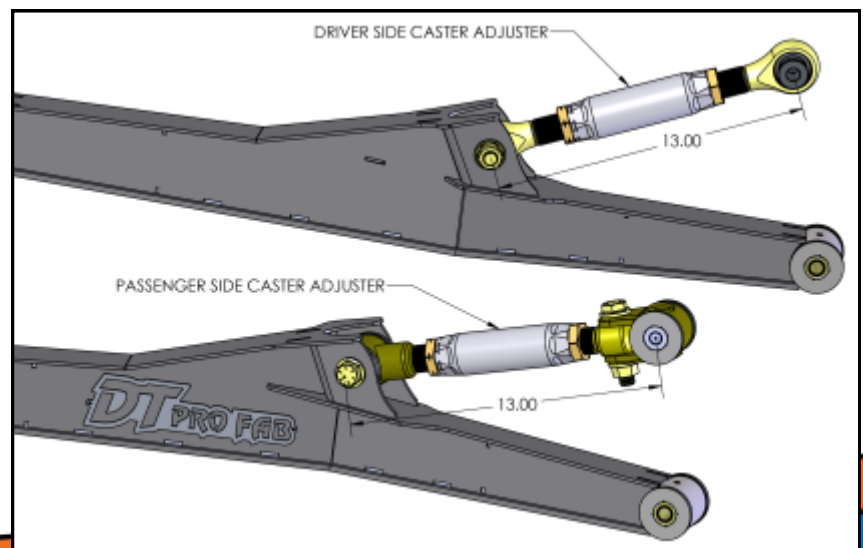
18. Repeat steps 12 thru 17 on passenger side Pick the appropriate sleeve based on the model year. (see parts list on next page). Lube bushings and sleeve with a good moly grease during assembly.

19. Reinstall wheels. Raise front of truck and remove jack stands.

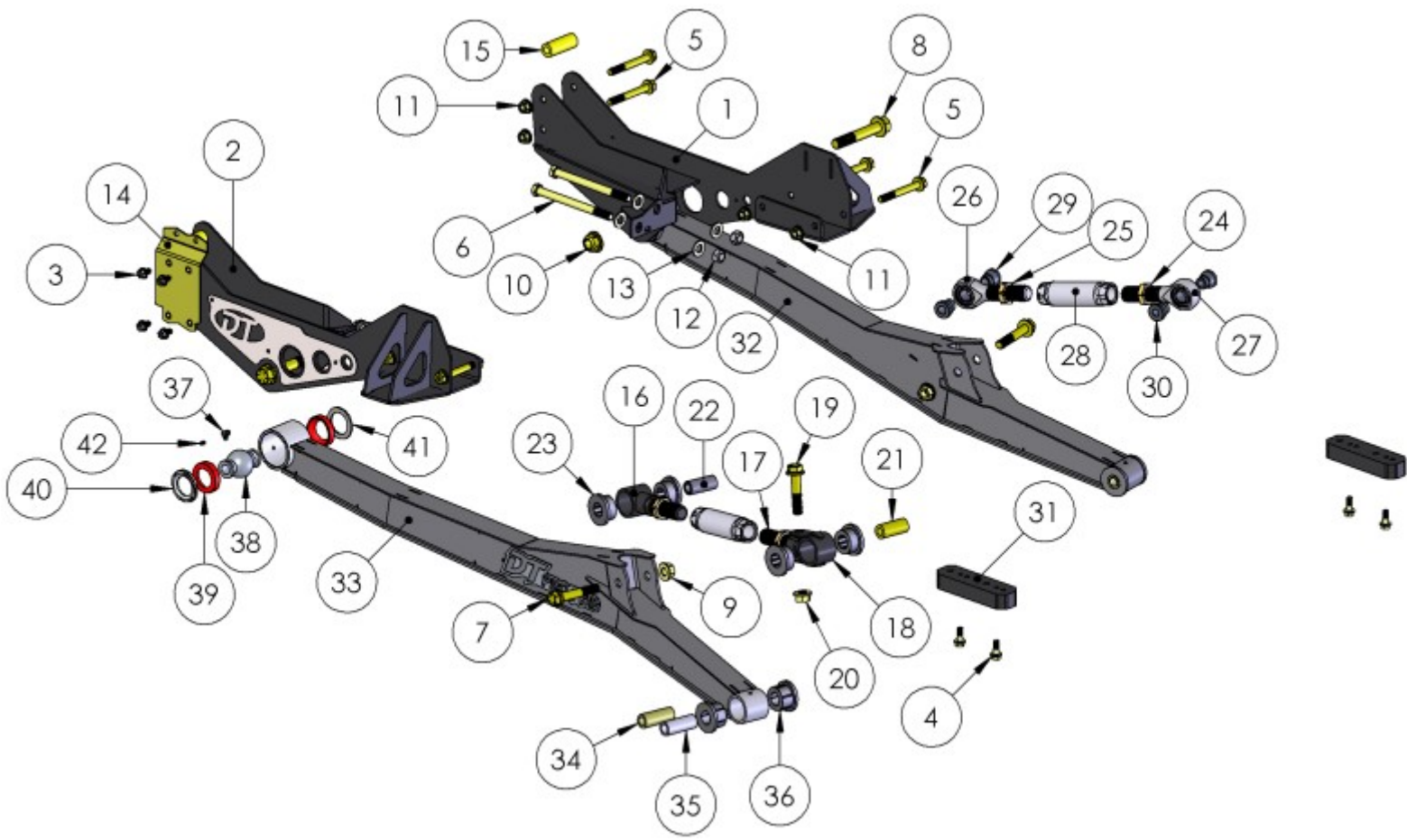
20. Recheck that all fasteners are properly Tightened

21. Installer: It is **BUYERS** responsibility to have all bolts and nuts checked for tightness after the first 500 miles and then every 1000 miles. Make them aware of this responsibility.

22. Take truck to an alignment shop and have the front end realigned.

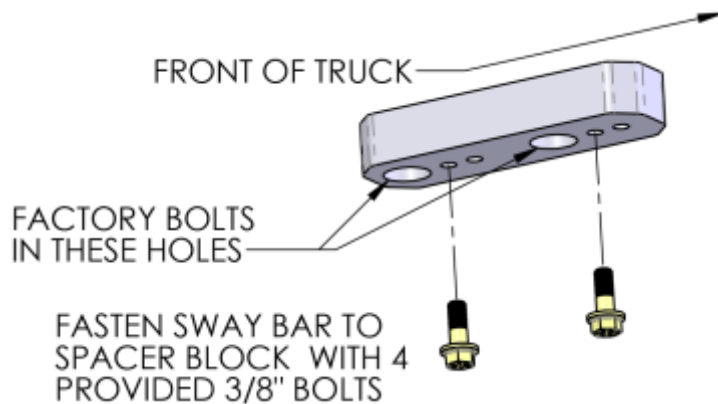


| | ITEM NO. | PART NUMBER | DESCRIPTION | QTY. |
|-----------------|-------------|--------------------------|---|-------------------------------------|
| BRACKET PACKAGE | 1 | 2052-210 | ONE-PC BOLT-ON BRKT DRIVER SIDE | 1 |
| | 2 | 2052-210M | ONE-PC BOLT-ON BRKT PASSENGER SIDE | 1 |
| | 3 | FLGBOLT37C062GRD8 | 3/8-16 x 0.625" GRD 8 FLANGE BOLT | 4 |
| | 4 | FLGBOLT37C100GRD8 | 3/8"-16 X 1.00" GRD 8 FLANGE BOLT | 4 |
| | 5 | FLGBOLT50C400GRD8 | 1/2"-13 X 4.00" GRD 8 FLANGE BOLT | 8 |
| | 6 | BOLT43C700GRD8 | 9/16"-12 GRADE 8 BOLT | 4 |
| | 7 | FLGBOLT62C350GRD8 | 5/8"-11 X 3.50" GRD 8 FLANGE BOLT | 2 |
| | 8 | FLGBOLT75C450GRD8 | 3/4"-10 X 4.50" GRD 8 FLANGE BOLT | 2 |
| | 9 | FLGNUT625C | 5/8"-11 FLANGE LOCK NUT | 2 |
| | 10 | FLGNUT750C | 3/4"-10 FLANGE LOC NUT | 2 |
| | 11 | FLGNUT500C | 1/2"-13 FLANGE LOC NUT | 8 |
| | 12 | NUT56C LOC | 9/16"-12 STOVER LOC NUT | 4 |
| | 13 | WASHER56SAE | 9/16" SAE WASHER | 8 |
| | 14 | DR58-0401 | ERG MODULE BRACKET | 1 |
| | 15 | CTL09-02J | GEN 3 FRAME ANTI-CRUSH SLEEVE | 2 |
| | 16 | 2050-1205A | CASTER ADJUSTER BUSHING END | 1 |
| | 17 | 2050-122 | CASTER ADJUSTER SWIVEL END STUD | 1 |
| | 18 | 2050-1211A | CASTER ADJUSTER SWIVEL END | 1 |
| | 19 | FLGBOLT62C300GRD8 | 5/8"-11 X 3.00" GRD 8 FLANGE BOLT (FOR SWIVEL END) | 1 |
| | 20 | FLGNUT625C | 5/8"-11 FLANGE 5/8" LOC NUT (FOR SWIVEL END) | 1 |
| | 21 | CTL09-02B | CRUSH SLEEVE; 99-12 UPPER LINK | 1 |
| | 22 | CTL09-02F | CRUSH SLEEVE | 1 |
| | 23 | DT98212 | 1.75" BUSHING (SOFT) | 4 |
| | 24 | JNR18S | 1 1/8"-12 RH JAM NUT | 2 |
| | 25 | JNL18S | 1 1/8"-12 LH JAM NUT | 2 |
| | 26 | 2052-1204-LH | REBUILDABLE JOINT W/ COM14 BEARING (LH) | 1 |
| | 27 | 2052-1204-RH | REBUILDABLE JOINT W/ COM14 BEARING (RH) | 1 |
| | 28 | 2050-1201 | ALUMINUM CASTER ADJUSTER | 2 |
| | 29 | DRTB1015-1 | HIEM REDUCING SPACER - 5/8" | 2 |
| | 30 | DRTB1015-2 | HIEM REDUCING SPACER - 14mm | 2 |
| | 31 | DRT59-125 | ALUMINUM SWAY BAR SPACER | 2 |
| | ARM PACKAGE | 32 | 02050-2013 | DRIVER SIDE LONG ARM - GEN 2, 3 & 4 |
| 33 | | 02050-2013M | PASSENGER SIDE LONG ARM - GEN 2, 3 & 4 | 1 |
| 34 | | CTL09-02D | CRUSH SLEEVE; 99-08 LOWER LINK; 1" OD x 16mm ID x 2.625" LONG | 2 |
| 35 | | CTL09-02E | CRUSH SLEEVE; 2009-UP LOWER LINK; 1" OD x 18mm ID x 2.625" LONG | 2 |
| 36 | | M02384 | URETHANE BUSHING | 4 |
| 37 | | ZERK-90 | 90 DEGREE ZERK FITTING | 2 |
| 38 | | BALLISTIC JOINT-BALL | 2" BALL | 2 |
| 39 | | BALLISTIC JOINT-BJ-673-2 | POLY BEARING RACE | 4 |
| 40 | | BALLISTIC JOINT-RETAINER | THREADED RETAINER | 2 |
| 41 | | BALLISTIC JOINT-WASHER | WASHER | 2 |
| 42 | | 1/4"-20 SET SCREW | SET SCREW | 2 |



SWAY BAR SPACERS: ITEM #31

REMOVE THE 4 FACTORY BOLTS HOLDING THE SWAY BAR TO THE UNDERSIDE OF THE FRAME. REUSE THE FACTORY BOLTS TO ATTACH ALUMINUM SPACER BLOCKS TO THE FRAME AT THE SAME LOCATION.





WARNING

POST-INSTALLATION NOTES:

- ⇒ Check all fasteners for proper torque before driving the vehicle for the first time with this kit.
- ⇒ Check all fasteners for proper torque after the first 500 miles, also it is recommended during routine vehicle servicing.
- ⇒ The components included in this kit require regular inspection for wear or damage. Worn, damaged or loose parts can fail suddenly resulting in loss of control of the vehicle and personal injury.
- ⇒ In ALL steering and suspension positions, check to ensure that there is adequate clearance between ALL rotating, moving, fixed and heated members. Ensure adequate clearance around steering components, exhaust components, brake lines, fuel lines, fuel tank and electrical wiring.
- ⇒ Visually inspect components for wear or damage after each off-road use and during routine vehicle servicing. Worn, damaged or loose parts can fail suddenly resulting in loss of control of the vehicle and personal injury.
- ⇒ In general, larger tire and wheel combinations may increase stress and wear on OEM components leading to increased maintenance and greater risk of component failure.
- ⇒ Property damage or personal injury may result.
- ⇒ Large tire and wheel combinations may also alter speedometer calibration, reduce braking effectiveness and alter vehicle center of gravity height (See product safety warnings).
- ⇒ For questions or suggestions, contact our Technical Assistance Department at (928) 776-4129.

TORQUE SPECIFICATIONS:

| | |
|-----------------------------|-----------------|
| 1/4 FASTENERS..... | 10 FT.-LBS. |
| 5/16 FASTENERS..... | 17 FT.-LBS. |
| 3/8 FASTENERS..... | 30 FT.-LBS. |
| 7/16-14 FASTENERS | 50 FT.-LBS. |
| 7/16-20 FASTENERS | 55 FT.-LBS. |
| 1/2-13 FASTENERS..... | 75 FT.-LBS. |
| 1/2 U-BOLTS..... | 65-80 FT.-LBS. |
| 9/16 FASTENERS..... | 110 FT.-LBS. |
| 9/16 GRADE 8 FASTENERS..... | 170 FT.-LBS. |
| 9/16 U-BOLTS..... | 75-90 FT.-LBS. |
| 5/8 FASTENERS..... | 150 FT.-LBS. |
| 5/8 U-BOLTS..... | 85-110 FT.-LBS. |
| 3/4 FASTENERS..... | 175 FT.-LBS. |

GLOSSARY OF TERMS:

| | |
|----|--|
| DS | Drivers side of the vehicle |
| PS | Passengers side of the vehicle |
| RH | Right hand thread (Clockwise to tighten) |
| LH | Left hand thread (Counterclockwise to tighten) |
| OE | Original equipment |

WARRANTY

Thank you for your purchase of a DT PROFAB product. We appreciate your business.

IMPORTANT INFORMATION:

Notice to Owner Operator, Dealer and Installer:

Please make sure your Dealer/Installer explains and delivers all warning notices, warranty forms and instruction sheets included with DT PROFAB product. DT PROFAB reserves the right to update as necessary, without notice, and will not be held responsible for misprints, changes or variations made by vehicle manufacturers.

Please note that certain mechanical aspects of any suspension lift product may accelerate ordinary wear of original equipment components. The installation of certain DT PRDFAB products may void the vehicle's factory warranty as it pertains to certain covered parts; it is the consumer's responsibility to check with their local dealer for warranty coverage before installation of any DT PROFAB product.

Warranty and Return policy:

DT PROFAB warrants its full line of products to be free from defects in workmanship and materials. DT PROFAB's obligation under this warranty is limited to repair or replacement, at DT PROFAB's option, of the defective product. **Any and all costs of removal, installation, freight or incidental or consequential damages are expressly excluded from this warranty.** DT PROFAB is not responsible for damages and/or warranty of other vehicle parts related or non-related to the installation of DT PROFAB product. A consumer who makes the decision to modify his vehicle with aftermarket components of any kind will assume all risk and responsibility for potential damages incurred as a result of their chosen modifications. Warranty coverage does not include consumer opinions regarding ride comfort, fitment and design. Warranty claims can be made directly with DT PROFAB or at any authorized DT PROFAB dealer.

Claims NOT Covered Under DT PROFAB Warranty

- Parts subject to normal wear, to include bushings, bump stops, ball joints, heim joints
- Coating Finish after 90 days
- Discontinued products at DT PRODUCTS, INC/DT PROFAB discretion
- Bent or dented product
- Leaf or coil springs used without proper bump stops
- Products with evident damage caused by abrasion or contact with other items
- Damage caused as a result of not following recommendations or requirements in the installation manuals
- Products used in applications other than listed in DT PROFAB's catalog
- Components or accessories used in conjunction with other manufacturer's systems
- Warranty claims without *Proof of Purchase* DT PROFAB accepts no responsibility for any altered product, improper installation, lack of or improper maintenance, or improper use of our products.



DT PRO FAB
Information & order Info
www.dtprofab.com
Email at sales@dtprofab.com
Phone 928.776.4129